



## Compact Collection Slender Washbasin

Washbasin in white cultured marble.

Dimensions, edges of the top, and fascia can be changed.

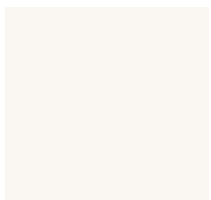


### Description

The sleek looking Slender basin has a block-like design aesthetic with a lowered sideboard into a straight-lined integrated washbasin. Slender washbasin comes in a solid Cotton White, and a textured, grainy Light Grey, Smokey Grey, Sand and Taupe finish.

Available both as over counter and suspended with dedicated fixing wall set. Basins can be made as a single centred/off-centred and double.

### Finishes



Cotton White



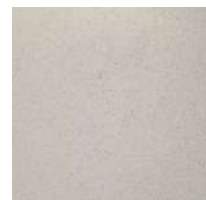
Light Grey



Smokey Grey



Sand



Taupe

### Internal Bowl Size

Slender: L 445 | W 250 | H 70

### External Dimension Ranges

Length up to 545 - 3000

Width 350

Fascia 30 - 200



## Perspectives of Slender Washbasin



Front Elevation



Side Elevation



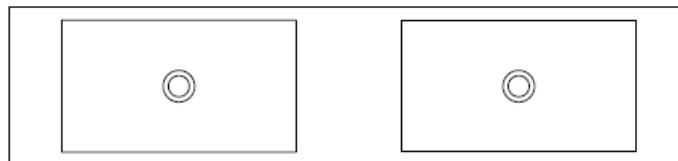
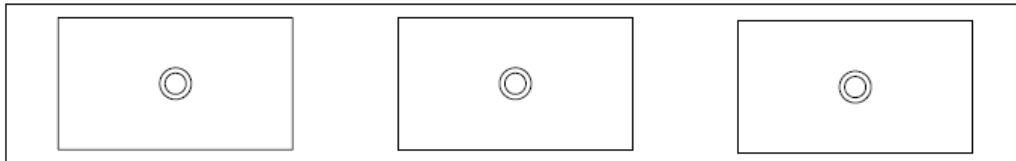
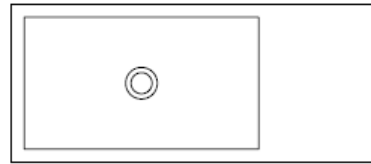
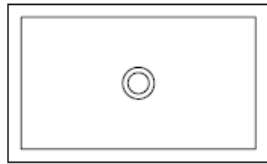
Plan



Perspective



Single Unit Centred, Single Unit Off-Centre, Multiple and Double Unit (3D line drawings)



- A Single Basin centred
- B Single Basin off-centred
- C Triple Basin
- D Double Basin



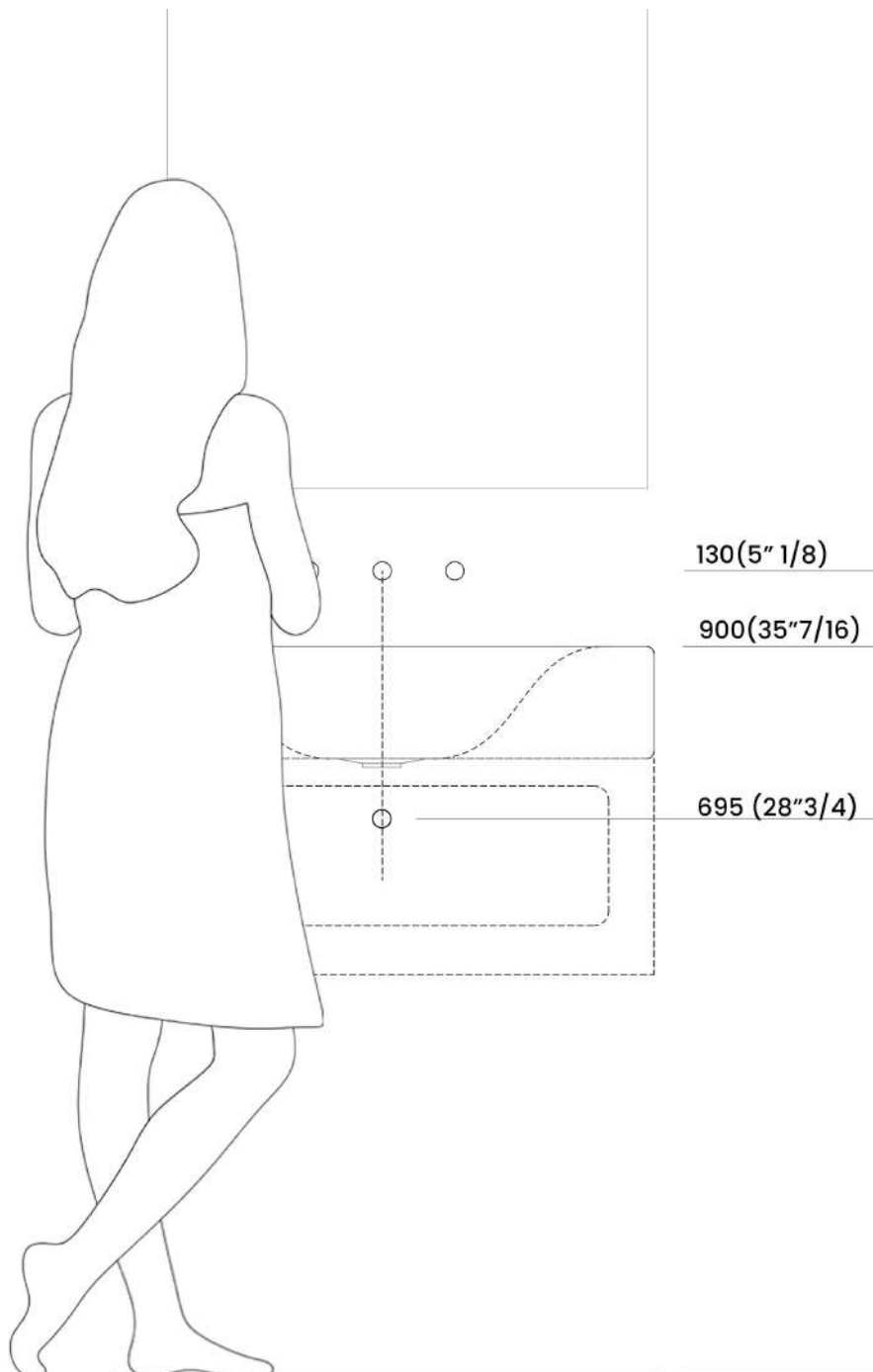
## Installation Guidelines

### Advised heights:

Top of basin: 900mm AFFL

Bottle trap wall connection: 630-695mm AFFL

Wall taps: 1030mm AFFL





## Material & Care Tips

Marblecast vanity basins and shower trays are made from a mixture of crushed marble and resin.

We use a ratio of 80% marble and 20% resin.

The material is mixed together and a small amount of catalyst is added.

The catalyst reacts with the resin and ensures that the resin polymerizes and hardens into a hard, strong mass.

This mass is then moulded into highly durable bathroom ware.

The product can be manufactured in either a satin or a high polish finish.

Clean with a soft cloth or sponge using soap or mild detergent and warm water.

The use of abrasive pads or chemical abrasives will dull the product over time.

The thermostat in the hot water cylinder should be set at 60–65 degrees Celsius.

It is recommended to first run cold water into the bowl with a plug followed by the hot water. This will allow the marble to warm up slowly and ensure the longevity and attractiveness of the product.

Stains can be removed by hand with a white polishing compound.

