

# MARBLECAST

CULTURED MARBLE

BATHROOM SHOWER TRAYS



## RAISED AND WALK-IN SHOWER TRAYS

4 Collections, 4 Designs  
Handcrafted, made to fit.

CONSUMER SHOWER RANGE

2020 | 2021

Less Is More



#### WHO ARE WE?

Marblecast has been manufacturing superior cultured marble sanitaryware since 1979. All of our cultured marble products are produced in our workshop in Cape Town by a team of experienced craftsmen, led by in-house engineering and design expertise.

Our product range is always evolving, with a focus on quality, design and craftsmanship. All of our products are made with the same dedication and care by our team that is passionate about service, detail and delivery.

#### WHAT DRIVES MARBLECAST?

We strive to be a world-class African Brand through the washroom products and modular bathroom systems that we produce.

Inspired by Scandinavian design, we wanted to create a modern contemporary range of sanitary-ware products that would engage the client with his or her wash-place experience.

Each series has its own signature design aesthetic and can be manufactured as a stand-alone product or in a modular system.

## FREQUENTLY ASKED QUESTIONS

#### What is Cultured Marble?

Cultured marble (or cast marble) is a blend of stone particles and resins that is combined with pigments to produce a hard, durable material. Unlike quarried stone, cultured marble is cast in moulds which allows for more flexibility with design.

#### How is Cultured Marble Made?

A mixture of crushed marble (80%) and resin (20%) are combined. A small amount of catalyst is added to harden and polymerize the resin. The mixture is poured into a mould where it transforms into a strong, hard mass. The mould is lined with a gel coat that bonds to the mixture to create a very hard transparent surface. Once the mixture is set, the product is removed from the mould, and polished to the desired finish.

#### How is Cultured Marble Made?

- Low maintenance material that does not need sealing.
- Easy to clean, with non-abrasive products (see our care guide for more info).
- As it is not porous, cultured marble is hygienic, withstands stains and is mildew resistant.
- More tensile strength than other materials, so its more resistant to chipping, abrasion and denting .
- More cost effective than quarried marble to manufacture and install.
- Durability makes it effective for high traffic commercial settings such as public washrooms in hospitality settings, shopping malls, schools etc.
- As products are cast in one piece, vanity tops and shower bases are seamless and watertight, and there are no grout lines to clean or maintain.
- Minor scratches, should they occur, can be repaired.
- The manufacturing process offers scope for creativity and custom solutions as products can be cast to your specification – size, shape, colour and finish.



## TABLE OF CONTENTS

---

### SLAB TRAY SERIES

PAGE NO.

Slab Tray Specs

08

### SLIMLINE TRAY SERIES

PAGE NO.

Slimline Tray Specs

14

His + Hers Tray Specs

16

### CURVE SHOWER SERIES

PAGE NO.

Curve Tray Specs

20

### EXTRA INFO

PAGE NO.

Shower Traps

22

Shower Installation

26

Sizes & Rates

28

Packaging & Transport

30

Product Storage

30

Care & Maintenance

31

Colour & Finishes

32

Product Composition

32

Contact

33

# SHOWER TRAYS



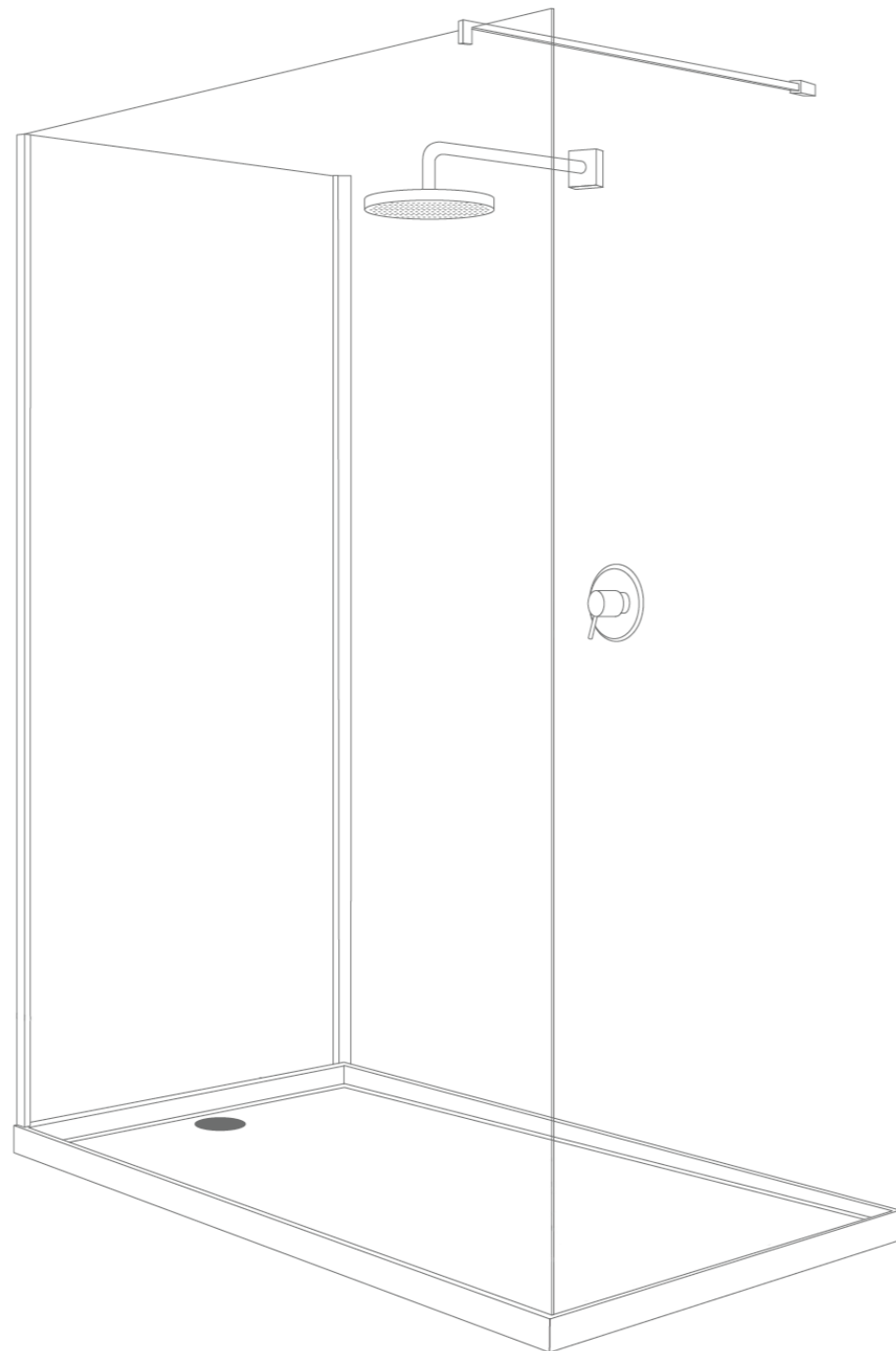
Anti-Slip Surface



Wide Colour Range



Custom Lengths



# C

**Contemporary solution for any bathroom.**

Our range of cultured marble bases are solid, hard wearing, and resistant to cracks. As each shower tray is cast in one piece to your specification, they are completely watertight. From compact showers to generous walk-ins, raised or flush, our seamless designs and superior materials consistently outperform traditional products.





WALK-IN  
SHOWER DESIGN CONCEPT



Recessed / Flushed

# SLAB TRAY SERIES

# F



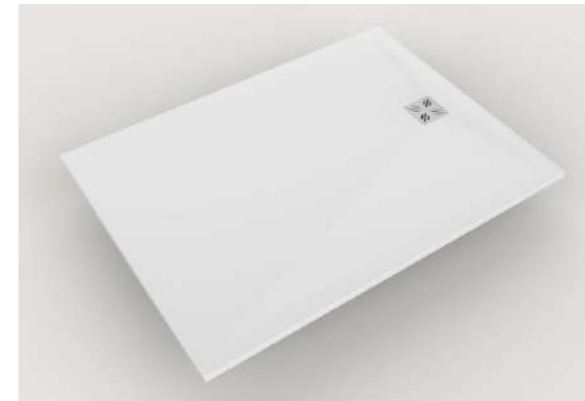
**Flat seamless, walk-in shower tray design.**

A Cultured Marble shower tray that can be installed flush or on top of the floor solid.

This shower tray design is perfect for open walk-in shower plans.

This shower tray is available in a thickness of 25-30mm.





Dimensions of the top, position of the waste and thickness can be changed.

## DETAILS

### EXTERNAL DIMENSIONS (mm)

Slab 900: L900 x W900

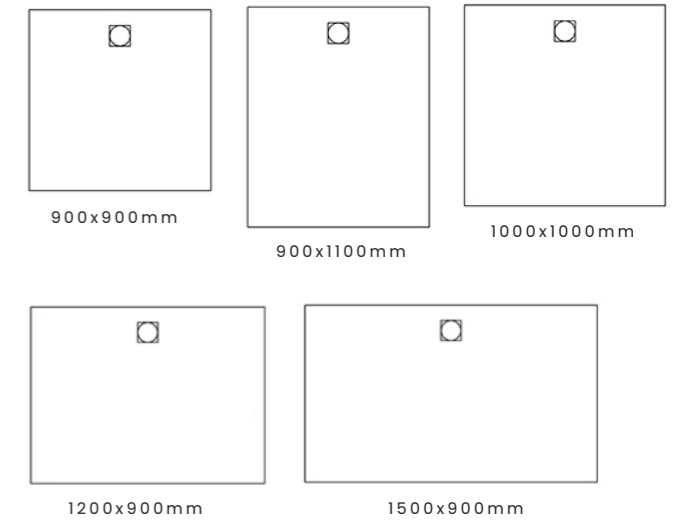
Slab 1000: L1000 x W1000

Slab 1100: L1100 x W900

Slab 1200: L1200 x W900

Slab 1500: L1500 x W900

Slab 1500: L1500 x W1000



### SHOWER DRAINS

Standard

Reversible

Channel

### SURFACE FINISH

Satin or Gloss surface finish

\*Each finish is applied with an Anti-slip coating

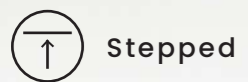
### COLOUR FINISHES



**Note:** See pg.26 for more info on our range of colour and surface finishes



RAISED  
SHOWER DESIGN CONCEPT





# SLIMLINE TRAY SERIES

# S

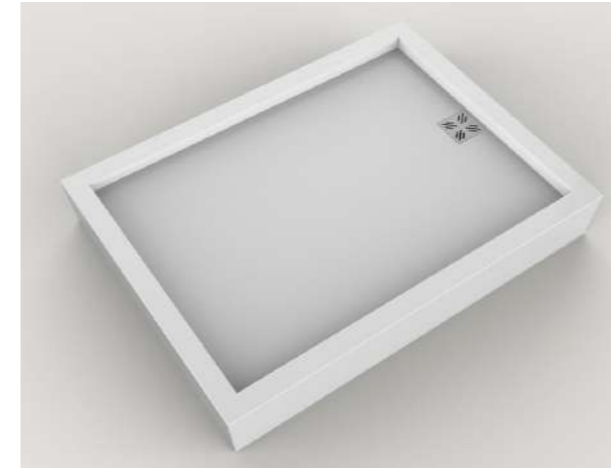
Stepped free-standing shower tray design.

A cultured marble shower tray with high perimeter edges with water stop capability, can be installed on top of the floor.

His + Hers Shower Tray collection is available as part of the Slimline Tray Series.

All shower trays are available in a fascia range of 30-200mm.





Dimensions of the top, position of the waste and thickness can be changed.

**DETAILS**

**EXTERNAL DIMENSIONS (mm)**

Slimline 900: L900 x W900

Slimline 1000: L1000 x W1000

Slimline 1100: L1100 x W900

Slimline 1200: L1200 x W900

Slimline 1500: L1500 x W900

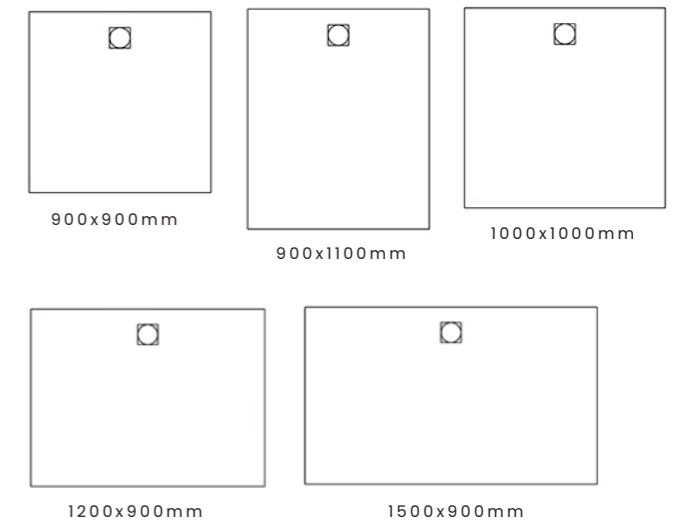
**SHOWER DRAINS**

- Standard
- Reversible
- Channel

**SURFACE FINISH**

Satin or Gloss surface finish

\*Each finish is applied with an Anti-slip coating



**COLOUR FINISHES**



**Note:** See pg.26 for more info on our range of colour and surface finishes

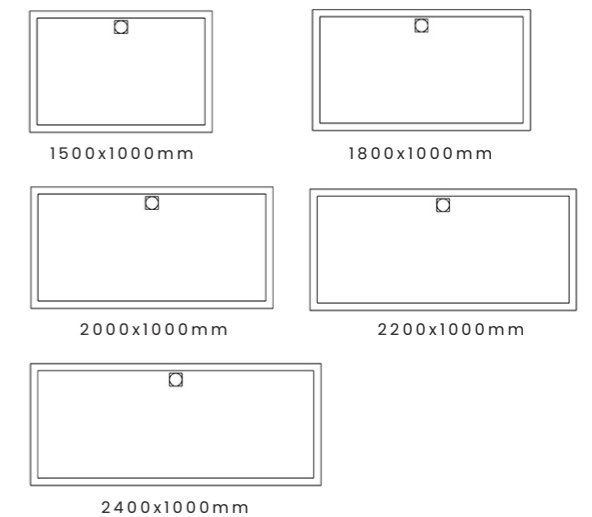


Dimensions of the top, position of the waste and thickness can be changed.

## DETAILS

### EXTERNAL DIMENSIONS (mm)

- His+Hers 1500: L1500 x W1000
- His+Hers 1800: L1800 x W1000
- His+Hers 2000: L2000 x W1000
- His+Hers 2200: L2200 x W1000
- His+Hers 2400: L2400 x W1000



### SHOWER DRAINS

- Standard
- Reversible
- Channel

### SURFACE FINISH

Satin or Gloss surface finish

\*Each finish is applied with an Anti-slip coating

### COLOUR FINISHES



**Note:** See pg.26 for more info on our range of colour and surface finishes

# CURVE TRAY SERIES



**Curved free-standing shower tray design.**

A cultured marble shower tray with high perimeter edges with water stop capability, can be installed on top of the floor.

This shower tray is available in a fascia range of 30-200mm.





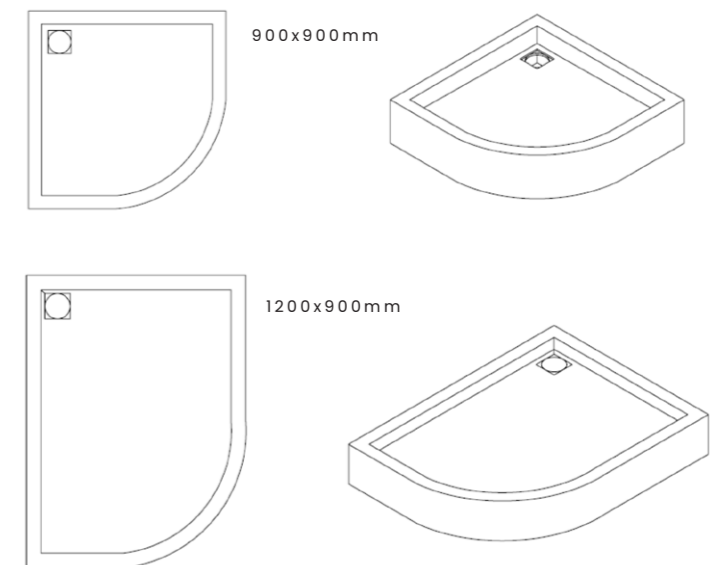
Dimensions of the top, position of the waste and thickness can be changed.

## DETAILS

### EXTERNAL DIMENSIONS (mm)

Curve 900: L900 x W900

Curve 1200: L1200 x W900



### SHOWER DRAINS

Standard

Reversible

Channel

### SURFACE FINISH

Satin or Gloss surface finish

\*Each finish is applied with an Anti-slip coating

### COLOUR FINISHES



Cotton White

Light Grey

Smokey Grey

Taupe

Sand

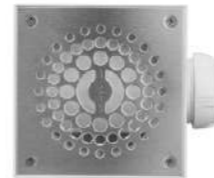
**Note:** See pg.26 for more info on our range of colour and surface finishes

## STANDARD TRAPS



### Twisto Compact Smart Trap

- Chrome or Matt Black coated stainless steel grid.
- Uncloggable under normal conditions.
- Easy to clean - The membrane and hair filter is removable.
- 32L/min flow rate
- 40mm outlet with 40-50mm glue fit pipe adaptor.



Matt Black



Stainless Steel



### Slim Expert

- Slim D90 mm stainless steel grid.
- No smell guarantee.
- Easy to clean - The membrane and hair filter is removable for easy cleaning.
- 27L/min flow rate.
- Horizontal outlet - 40mm compression.



Stainless Steel

## REVERSIBLE TRAPS



### Reversible Smart Trap

- 150mm square Shower Trap, 304 Stainless Steel.
- Cover can be reversed for resin filler.
- Easy to clean - Cover, inner filter and trap can be lifted.
- Fitted membrane for waterproofing.
- 50mm outlet with 40mm adaptor.



Stainless Steel



### Reversible Channel Trap 300mm

- 304 Stainless steel channel with adjustable levellers for easy and accurate fitments.
- 500mm x 94mm linear waste.
- Easy to clean - Inner trap and sieve lifted out for cleaning.
- Pre-cut water-proofing membrane included.
- 50mm Outlet with optional 40mm attachment.



Stainless Steel

## CHANNEL TRAPS



### Gio Channel Trap 500mm

Available in 250mm and 700mm.

- 304 Stainless Steel or Matt Black
- 500mm x 94mm linear waste
- Height allowance underneath shower tray: 120mm
- Outlet available.



### Venisio Slim Channel 500mm

- Matt Black coated or Stainless Steel grid
- Supplied with an anti-cracking sealing.
- Easy to clean - Easy removable filter from above.
- 35L/min flow rate.
- Connection: Ø40 mm female to be glued.



## WHICH TRAP IS FOR YOU



### Standard Traps

#### Twisto Square High Flow

Square design orientable to 360 Degrees for easy alignment makes this shower waste ideal for cultured marble showers.

Twisto is a symphonic, high performance shower waste with a high flow rate.

Bringing a touch of design to the bathroom with a elegant Chrome or Matt Black grid.

#### Slim Expert

The slim range is specially designed to be fitted to the flattest trays on the market, in 90mm outlet thanks to its low height.

Bringing a touch of design to the bathroom with the elegant stainless steel circular grid.

### Reversible Traps

This type of reversible shower trap is ideal for bathrooms where one is wanting to use the same material on the surface of the drain as the shower tray.

Using this style of trap will create a unique, high-end designer look to your shower space, with only the grid visible.

### Channel Traps

#### Venisio Slim 500

This type of shower channel drain is used in a wet room or where one is aiming for a seamless look and has the shower floor flush with the bathroom floor.

Using the Venisio Slim channel will reduce the risk of flooding in the bathroom from the shower floor.

A reduced height of only 50mm - adjustable to 110mm means that the Slim channel does not require a large depth underneath, which makes for easy installation.

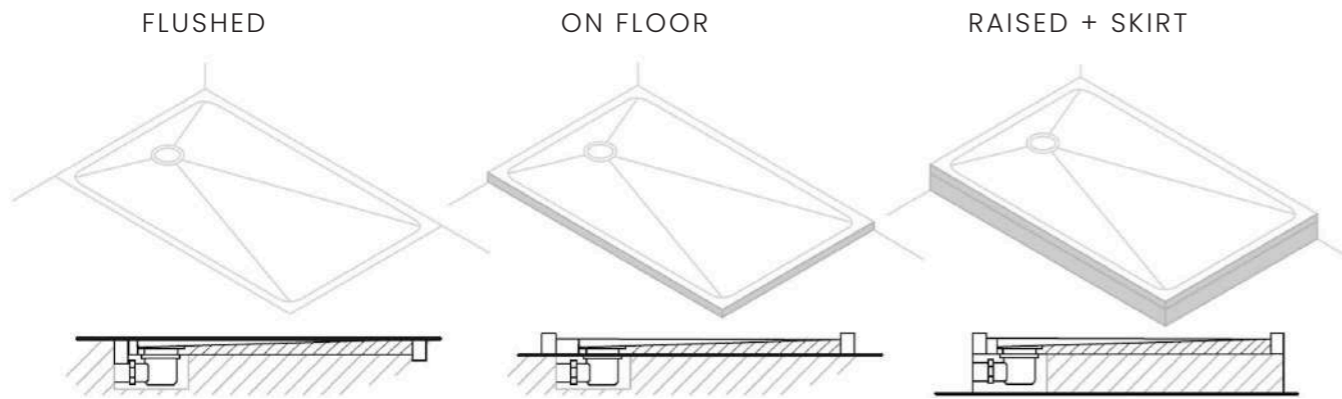
#### Gio Channel 500

This type of shower channel drain is used in a wet room or where one is aiming for a seamless look and has the shower floor flush with the bathroom floor.

The Gio channel will reduce the risk of flooding in the bathroom from the shower floor and is easy to install.

Bringing design versatility to the bathroom, the channel is available in elegant matt black or stainless steel.

# SHOWER INSTALLATION



## Warning Guidelines:

### 0. Before

Before installing the shower tray, ensure that the dimensions are correct and that the pack includes the drain valve.

Do not install the shower tray outside or in places exposed to direct UV radiation.

It's important to leave enough space to deepen and plan the drain valve.

### 1. During

Clean the area where you are installing the shower tray. Check the pipe and drain connection dimensions. The all-round seals must be taken into account.

Protect edges while handling trays using cardboard or plastic.

Protect the shower tray with cardboard or plastic and secure with tape to prevent damages.

### 2. After

Check the drain on the shower tray.

Seal the joint between the tray and the rest of the floor completely to prevent leaks.

Clean adhesive residue and dirt with non-abrasive household cleaners.

### Extra

The shower tray must be supported over its entire base area.

Level the tray on bricks or wet cement.

Fitting a shower tray correctly can be the difference between a smoothly running, watertight bathroom and costly leaks.

## Installation of Recessed Slab Tray

- Concrete slab floor to be solid, secure and stable and to withstand the correct shower tray weight requirement of 50-100kg depending on the size of the tray
- A 22-24mm recess to be created in the concrete slab under the entire shower tray area
- A cavity of 400x400x60mm for the surrounding waste area to be created, to house waste pipe connections – Wirquin Jollybath spiral tube recommended
- A height tolerance of 60-120mm to be assigned for the waste;
- After the cavity has been created, waste pipes to be laid to ascertain whether sufficient space has been allowed for
- The demarcated shower area (recessed sides and base) and 20% perimeter area to be adequately waterproofed with an appropriate product, and applied to shower floor and walls
- Waterproofing to include a combination of a fibre membrane and cementitious waterproofing coating, and applied to concrete slab flooring
- Laying of shower tray onto floor requires two people to ensure careful placement
- Before lowering tray onto the floor, attach complete waste to the tray
- Jollybath tube to be connected, without kinks, to waste, and tray to be lowered into position
- Check that all sides of tray line up to tiled walls and that you are satisfied with final orientation
- Surrounding finishes at final floor level to be installed up to edges of shower tray
- Appropriate corner trim along open perimeter edge of tray recommended to conceal open sides of recess
- Once shower area has completely dried and cured, the shower is to be cleaned before silicone is applied to the full perimeter of the shower tray

## Installation of Raised Slimline Tray

- The Slimline shower tray can be installed as a free-standing unit on top of the finished floor
- Slab or wooden truss floor to be solid, secure and stable and to withstand the correct weight requirement of 60-120kg depending of the shower tray
- Ensure that all walls surrounding shower tray area are square after plaster and paint have been applied
- At this stage, your outlet waste pipes to be laid, to make sure that sufficient space has been allowed for
- Outlet connection to line up with waste location
- For a vertical outlet, a 60-120mm height tolerance under waste to be allowed for, which will determine the overall height of the tray
- A height of 100mm is typical for the vertical outlet application
- For a horizontal outlet, a low profile waste to be specified to allow for all waste pipes to be housed under the tray
- Tray height of 140mm is typical for the horizontal outlet application, which requires a dedicated waste pipe cut-out
- Shower wastes that can be securely fixed onto the tray are recommended
- Waste pipe cut-out location and size to be specified by the installer for manufacturing purposes
- Demarcated shower area and 20% perimeter area to be sufficiently waterproofed with an appropriate product, applied to shower floor and walls
- It is recommended for floor finishes to run under the shower tray for the neatest finish
- Laying of shower tray onto floor, requires two people to ensure careful placement;
- Before lowering, attached complete waste to tray and Jollybath tube from waste to outlet without any kinks
- Tray to be gently lowered into position
- At this point it is recommended to check drainage system for leaks, before tiles secure the tray in place
- Check that all sides of the tray line up with plastered and painted walls and that you are satisfied with final orientation
- Once shower area has completely dried and cured, shower to be cleaned before silicone is applied to the full perimeter of the shower tray



**SIZES & RATES**

Marblecast offers a customisable range of cultured marble basin products.

Length, width, fascia height and top counter measurements can be made to fit to requirements.

Indicative pricing is based on linear metres as indicated by our shower tray ranges below.

All pricing does not include transport costs.

ITEM	DESCRIPTION	RATE
<b>SLIMLINE   HIS + HERS</b>	<b>TRAY LENGTHS</b>	<b>PRICE INCL. VAT</b>
Slimline 900x900	900x900mm	R 7 950,00
Slimline 1000x1000	1000x1000mm	R 8 450,00
Slimline 1100x900	1100x900mm	R 8 250,00
Slimline 1200x900	1200x900mm	R 8 925,00
Slimline 1200x1000	1200x1000mm	R 9 675,00
Slimline 1500x900	1500x900mm	R 10 250,00
Slimline 1500x1000	1500x1000mm	R 10 950,00
Slimline 1800x1000	1800x1000mm	R 12 750,00
Slimline 2000x1000	2000x1000mm	R 13 250,00

ITEM	DESCRIPTION	RATE
<b>SLAB</b>	<b>TRAY LENGTHS</b>	<b>PRICE INCL. VAT</b>
Slab 900x900	900x900mm	R 5 265,00
Slab 1000x1000	1000x1000mm	R 6 500,00
Slab 1100x900	1100x900mm	R 6 350,00
Slab 1200x900	1200x900mm	R 7 570,00
Slab 1200x1000	1200x1000mm	R 8 280,00
Slab 1500x900	1500x900mm	R 8 950,00
Slab 1500x1000	1500x1000mm	R 9 750,00
Slab 1800x1000	1800x1000mm	R 10 250,00
Slab 2000x1000	2000x1000mm	R 10 7 50,00

ITEM	DESCRIPTION	RATE
<b>CURVE</b>	<b>TRAY LENGTHS</b>	<b>PRICE INCL. VAT</b>
Curve 900x900	900x900mm	R 7 250,00

ITEM	DESCRIPTION	RATE
<b>COLOUR</b>		R 800,00
<b>EXTRA TILING KEY</b>		R 125,00



**SHOWER APPLICATION**

Marblecast takes the most care when it comes to packaging and transporting your products.

Each package is carefully wrapped in different grades of cardboard and cling wrap/bubble wrap.

Marblecast also offers tracking with each package and a close access of communication to avoid any complications.

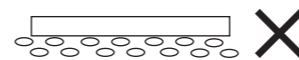
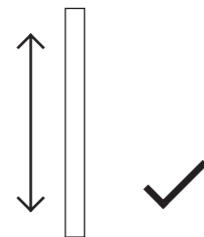
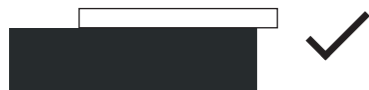
After all, this is your experience that we are excited to be a part of.

PRODUCT STORAGE AND INSTALLATION

Storage

Marblecast products must be stored out of direct sunlight and at a room temperature. Flat panels should be stored face up and on flat surfaces.

Shower bases should be stored flat or on one side.



Installation

There are essentially two different types of shower tray: low profile trays that are designed to sit as low to the floor as possible, and freestanding shower trays that stand above the ground on a base.

If you want a tap-free shower that you enter at ground level, then you will need a low-profile flat shower tray.

Adjustable height trays are useful in that they can be lowered or raised to your desired height and allow easy access to the pipes underneath in case of leaks or if anything needs replacing.

Cultured Marble Product Care



Cleaning

We strongly advise to never use any abrasive household cleaners, scrubbing pads or any chemical cleaners with high acidic levels on your cultured marble products as they will damage the gel-coat protective layer.

Your cultured marble product has been polished to a high gloss or satin finish.

With every white satin finish, you should apply a white compound cleaner when cleaning your shower tray.

Another method is to spray daily shower cleaners on the surrounds, we recommend using Lime Away on heavy water spotted areas as long as the gel-coat is still on the surround.

Maintenance

Set your thermostat in your geyser to 60-65 Degrees Celsius to avoid thermal shock. It is recommended to run cold water into the bowl first followed by hot water. This will allow the marble to warm up slowly and ensure the longevity and attractiveness of your products.

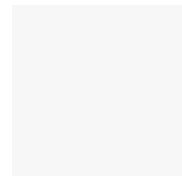
Our cultured marble products are often sought after, as they are fully customisable and low-maintenance.

Stubborn stains can be removed by hand with a white polishing compound or non-harsh abrasive cleaner.

## COLOURS & FINISHES

Marblecast produces its products in satin and gloss, and offers it in a range of colours to choose from. Samples of the colours and product finishes can be viewed upon request.

All colours may differ from finished product.



Cotton White



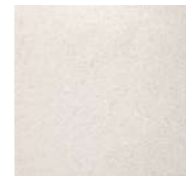
Light Grey



Smokey Grey



Taupe



Sand

## PRODUCT COMPOSITION

Marblecast products are locally made from a mixture of crushed marble and resin to create standard and custom bathroom-ware products.

The material is intensely durable, but excludes the porousness of natural marble. Seamless integrated vanity tops and shower trays are cast in one place.

Our cultured marble assures product quality that offers the beauty, opulence and elegance of marble.

**Handcrafted, made to fit.**



## CONTACT INFORMATION

**Jess O'Hanlon**  
Business Development Manager

+27(0) 60 492 5910

jess@marblecast.co.za

**For General Enquires**

+27(0) 21 511 0768

sales@marblecast.co.za

**Social Media**

Instagram | marblecast\_za

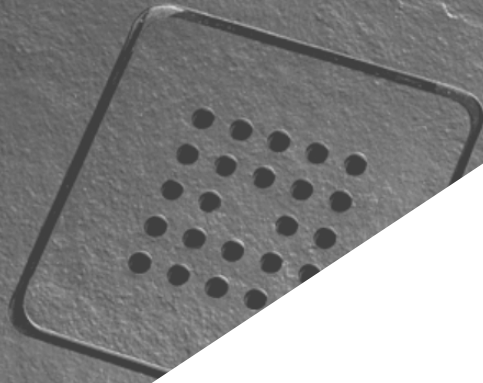
Facebook | Marblecast.ZA

**For More Information Visit**

www.marblecast.com



Value-Add technical drawings & 3D models are provided with quotes.



## FIND US HERE

32 Section Street | Paarden Eiland | 7405 | Cape Town

Mon - Fri | 08:00 - 17:00