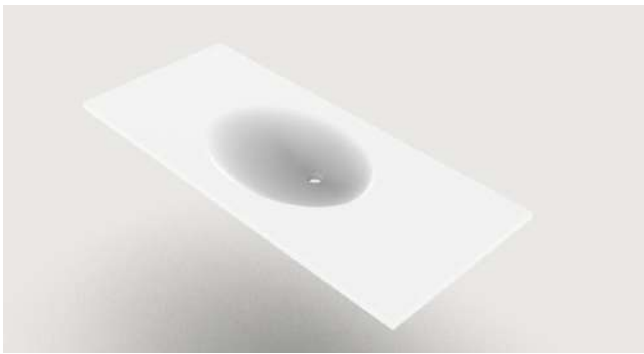




Arc Collection Oval Washbasin

Washbasin in white cultured marble.

Dimensions of the top, position of the tap and fascia can be changed.

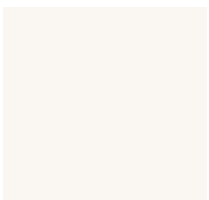


Description

The modern and minimal Oval basin has a sleek design with an almond-shaped, integrated washbasin. Oval washbasins come in a solid Cotton White, and textured Evening Shadow (Light Grey), Slate Grey (Mid-Grey), Natural and Pigeon.

Available both as over counter and suspended with its dedicated fixing wall set. Basins can be made as a single, double or multiple unit.

Finishes



Cotton White



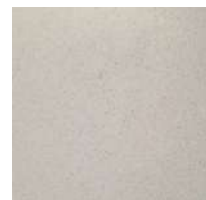
Evening Shadow



Slate Grey



Natural



Pigeon

Internal Bowl Sizes

Oval S: L 355 | W 250 | H 150

Oval M: L 450 | W 280 | H 155

Oval L: L 480 | W 330 | H 125

Oval XL: L 500 | W 320 | H 180

External Dimension Ranges

Length up to 500 - 3000

Width 300 - 600

Fascia 30 - 200



Applications showcasing single | multiple basin units.



Oval Single Basin Centred



Oval Single Basin Centred

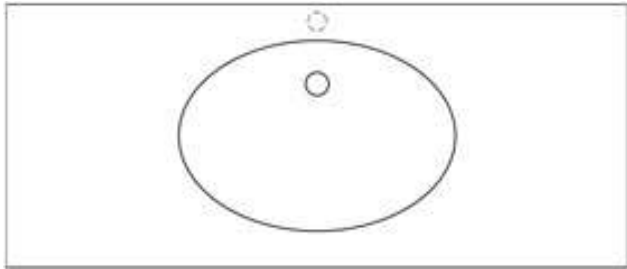


Oval Double Basin

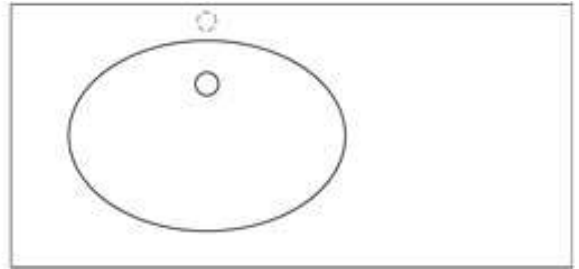


Oval Multiple Basin

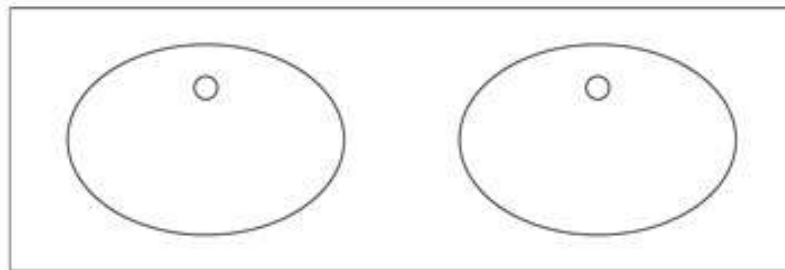
Single Unit Centred, Single Unit Off-Centre, Double Unit, Multiple Unit of each size.
(3D line drawings)



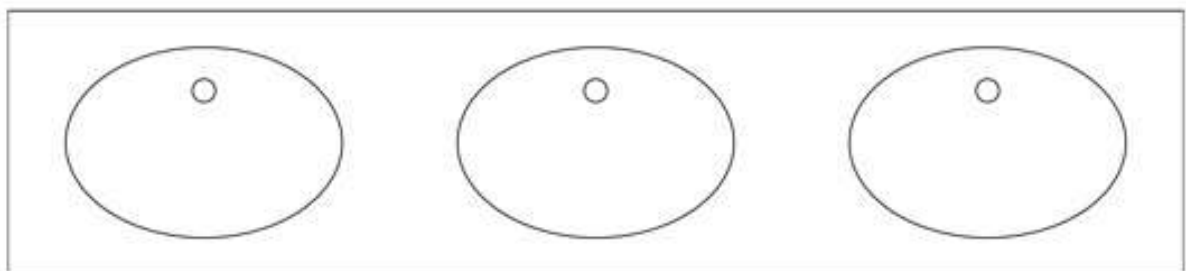
A



B



C



D

- A Single Basin centred with left and right counters
- B Single Basin with extended right counter
- C Double Basin
- D Triple Basin



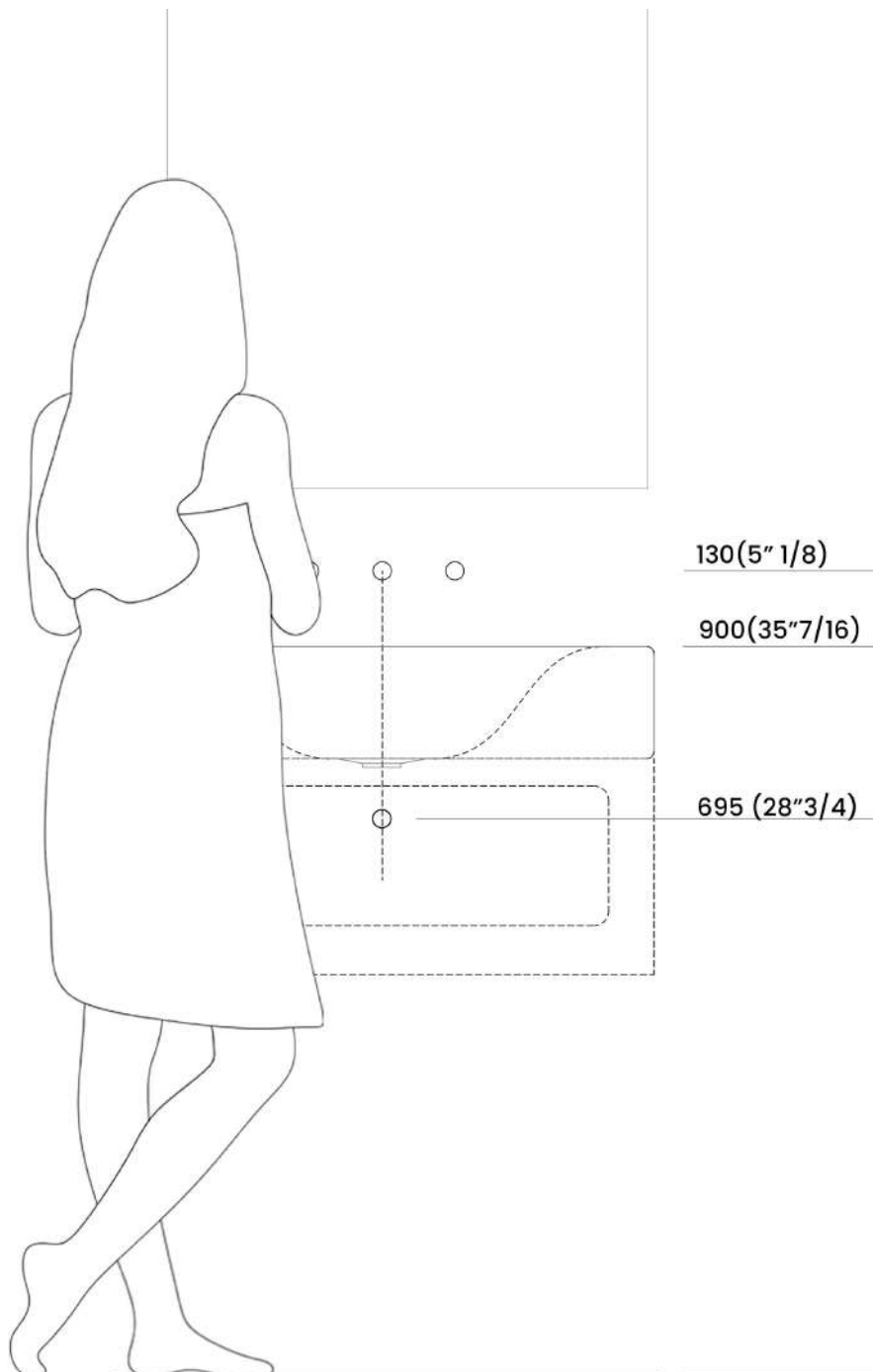
Installation Guidelines

Advised heights:

Top of basin: 900mm AFFL

Bottle trap wall connection: 630-695mm AFFL

Wall taps: 1030mm AFFL





Material & Care Tips

Marblecast vanity basins and shower trays are made from a mixture of crushed marble and resin.

We use a ratio of 80% marble and 20% resin.

The material is mixed together and a small amount of catalyst is added.

The catalyst reacts with the resin and ensures that the resin polymerizes and hardens into a hard, strong mass.

This mass is then moulded into highly durable bathroom ware.

The product has been polished to a high gloss.

Clean with a soft cloth or sponge using soap or mild detergent and warm water.

The use of abrasive pads or chemical abrasives will dull the product over time.

The thermostat in the hot water cylinder should be set at 60–65 degrees Celsius.

It is recommended to first run cold water into the bowl with a plug followed by the hot water. This will allow the marble to warm up slowly and ensure the longevity and attractiveness of the product.

Stains can be removed by hand with a white polishing compound.

